

FACT SHEET

Respecting and Protecting Marine Wildlife

Ensuring Responsible Offshore Wind Development

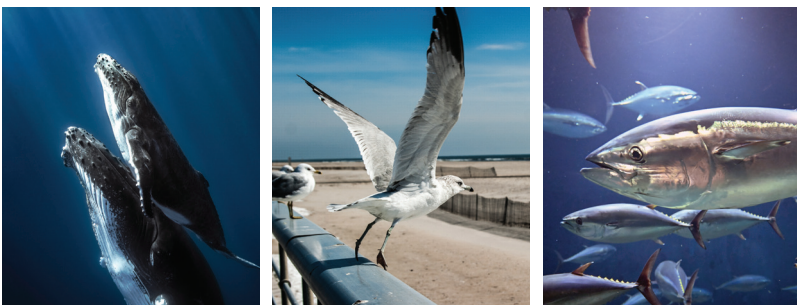
Beacon Wind, a vital part of America's commitment to renewable energy development, is planned for a 128,000-acre area in federal waters. Located approximately 60 miles east of Montauk Point and 20 miles south of Nantucket, the Beacon Wind project represents not only a significant step in addressing climate change but also in preserving marine life and ecosystems. By eliminating dependence on fossil fuels, offshore wind will benefit the environment while also creating healthier communities.

How were the federal areas selected?

The Bureau of Ocean Energy Management (BOEM), the federal agency responsible for offshore renewable energy development in federal waters, carefully identified the lease area through an extensive scoping and environmental review process. Collaborating for nearly a decade with federal, state, local, and tribal partners, BOEM worked to determine areas best suited to commercial wind energy activities that would present low environmental and user conflicts. This included a multi-year survey of whale, turtle, and bird species' presence to avoid high concentrations of these protected species. Public input was also incorporated through scoping and environmental assessment.

Environmental Studies and Surveys

Beacon Wind conducted extensive baseline research on marine mammal abundance, distribution, and behavior to build on BOEM's environmental assessments. Numerous environmental studies were also conducted to evaluate potential impacts throughout the preconstruction, construction, operations, and decommissioning phases.



Aerial Surveys and Metocean Data Collection

High-Resolution aerial surveys were conducted in the Lease Area

- Year 1, Dec 2019 - Nov 2020: 16 [surveys](#)
- Year 2, Mar 2021 - Oct 2021: 12 [surveys](#)

Metocean buoys, Current Moorings, and LiDAR collect meteorological, wildlife, and ocean data

- Metocean data available [here](#)
- Watch the [webinar here](#)

Vemco fish tag receivers deployed in collaboration with the New England Aquarium

Ongoing Monitoring and Partnerships

Beacon Wind is committed to investing in research that promotes responsible offshore wind development and supports ocean health and marine mammals. Collaborating with sister project Empire Wind, Beacon Wind has:

- Contributed \$12 million to a partnership with the Wildlife Conservation Society and Woods Hole Oceanographic Institute to fund real-time monitoring of whales and to make the data publicly available.
- Supported the Responsible Offshore Science Alliance (ROSA) and the Regional Wildlife Science Collaborative for Offshore Wind (RWSC) to facilitate regional research on critical commercial fish stocks and wildlife conservation.
- Engaged in a joint program with other offshore wind developers led by the New England Aquarium and the Massachusetts Clean Energy Center to track migratory species and better understand migration patterns as the Project develops.

Mitigation Strategies

The offshore wind industry adheres to stronger mitigation measures than any other marine industry and is subject to rigorous federal and state permitting reviews which evaluate development strategies and their potential environmental impacts. Permits are required prior to the start of construction. The Project is anticipating the use of several mitigation strategies:

1. Protected Species Observers (PSOs): Independent, trained, NOAA-approved professionals will monitor federally protected species on all vessels under the Endangered Species Act and the Marine Mammal Protection Act.

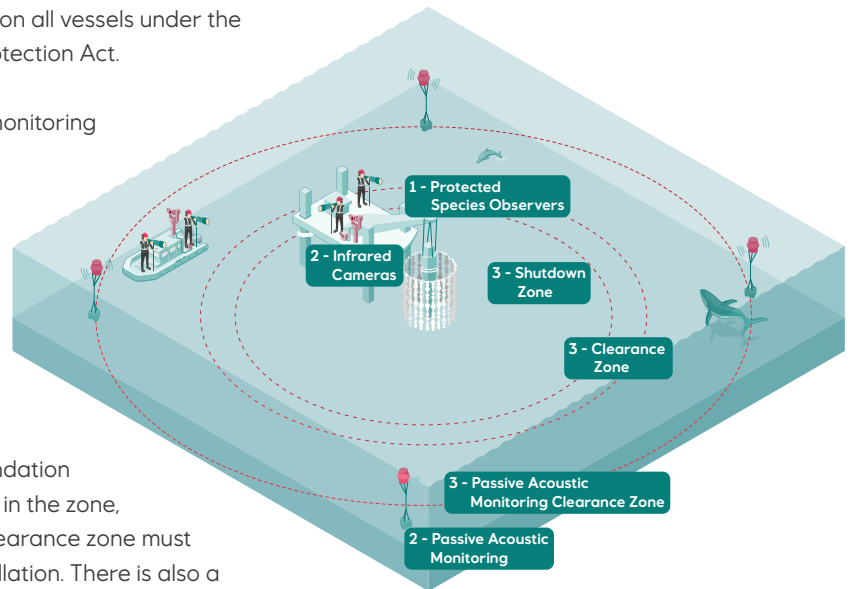
[Learn more here.](#)

2. Monitoring: Beacon Wind will employ an integrated monitoring approach. Strategies may include passive acoustic monitoring and infrared cameras which are designed to detect marine mammals within certain distance thresholds.

3. Minimizing Noise and Vibration: Independent and NOAA-approved PSOs monitor and document marine mammals and enforce clearance zones and shutdown zones, with the aid of passive acoustic monitoring and infrared cameras. Clearance zones ensure no marine mammals are in the area when foundation installation begins – if marine mammals are observed in the zone, installation is delayed until they leave the area. The clearance zone must be clear for a certain period prior to the start of installation. There is also a shutdown zone within which foundation installation is stopped, when feasible, if a whale enters during construction. Finally, if a North Atlantic right whale is detected visually at any distance, foundation installation must stop until the animal has cleared the area.

4. Vessel Strike Avoidance Measures: Construction crews will receive comprehensive training in protected species sighting/reporting and vessel strike avoidance before in-water construction activities start. For example, when vessels encounter marine mammals, they will maintain parallel courses, avoid excessive speeds or abrupt changes in direction, shifting to neutral engine mode until the animals have safely departed the area. Project-related vessels will also comply with NOAA Fisheries speed restrictions within the Mid-Atlantic U.S. Seasonal Management Area (SMA) and Dynamic Management Area (DMA).

5. Seasonal Restrictions: The Project is evaluating seasonal restrictions to foundation installation to limit installation to times of the year when protected species, like the North Atlantic right whales, are least likely to be present.



Commitment to Stakeholder Transparency

Through meticulous planning, cutting-edge technologies, and continued collaboration with experts, Beacon Wind remains at the forefront of driving sustainable offshore wind energy, ensuring the preservation of our oceans and the diverse life they sustain. As our projects continue to progress, so will our commitment to transparency and sharing information about Beacon Wind's marine life protection efforts.

More Information

- For more information on Beacon Wind's Environmental Mitigation Plan, please [visit here](#).
- For more information on Beacon Wind's Construction & Operations Plan and the National Environmental Policy Act (NEPA) process, please [visit here](#).
- For more information about BOEM's environmental studies, please [visit here](#).

Have a question about Beacon Wind?

Contact beaconwind@equinor.com

To sign up for project updates, visit www.beaconwind.com/sign-up

Beacon Wind is a 50/50 partnership between Equinor and bp. Equinor will be the operator through the development, construction, and operations phases of the project.