

Recent News & Updates



The above image is not for display. The above image is not for display. The above image is not for display.

Hello Elizabeth,

Equinor Wind US has contracted ST Hudson to perform a ROV/sonar wreck investigation of six targets along the Empire Wind export cable route in the Hudson River / Lower New York Bay, near the Verrazzano Bridge. The Bella Marie will be conducting the estimated 2 week survey beginning the week of July 11, 2022 (12-HR Operations).



Vessel: Bella Marie

MMSI: 338417507

Call sign: Survey

- Coordinates: 40°36'21"N 74°02'13"E (chart below)
- Shallow areas of 3-12 meters (10-39ft)
- High resolution surface bathymetry and ROV inspection conducted

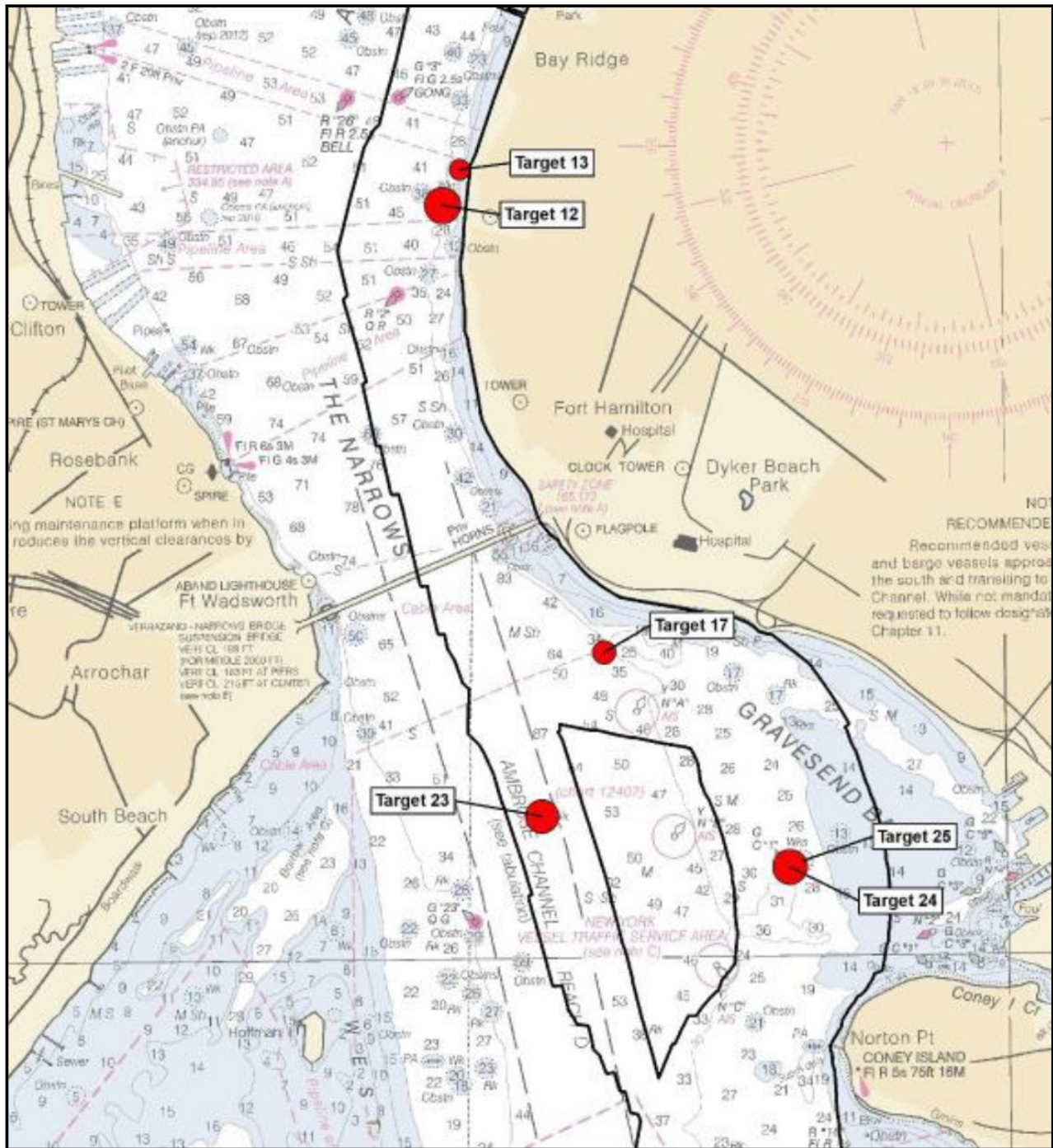
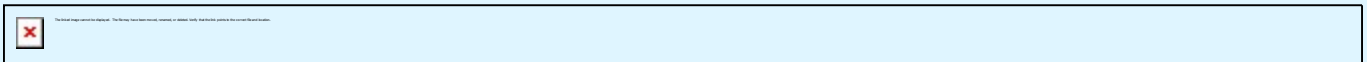


Figure 3 - Survey Target Areas



Equinor Wind US has contracted Ocean Infinity and CSA to conduct 7 CPT soil investigations along the Beacon Wind export cable route (survey chart area below) beginning the week of July 11, 2022. Vessel Danielle Miller will be conducting the geotechnical sampling with an estimated completion time of ~2 weeks.



Vessel: Danielle Miller

MMSI: 368028980

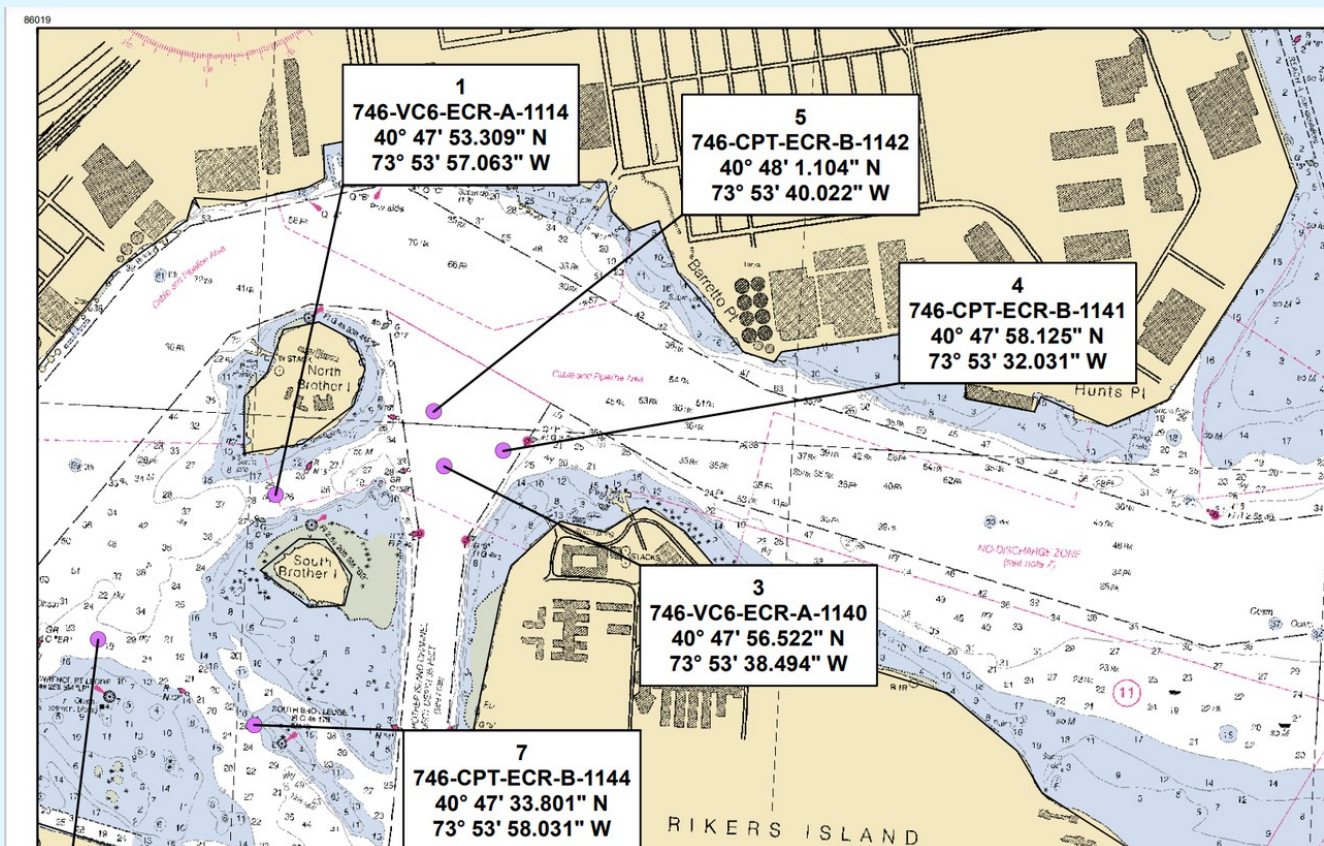
Call sign: WDJ9747

Standing by on VHF 16

Coordinates and chart below:

1. CPT 1: 40° 47' 53.309" N, 73° 53' 57.063" W
2. CPT 2: 40° 47' 55.019" N, 73° 50' 54.639" W
3. CPT 3: 40° 47' 56.522" N, 73° 53' 38.494" W
4. CPT 4: 40° 47' 58.125" N, 73° 53' 32.031" W
5. CPT 5: 40° 48' 1.104" N, 73° 53' 40.022" W
6. CPT 6: 40° 47' 40.252" N, 73° 54' 15.896" W
7. CPT 7: 40° 47' 33.801" N, 73° 53' 58.031" W

During the survey, the vessel will be deploying subsurface survey equipment along the export route corridor and will be restricted in their ability to maneuver. Approaching vessels are requested to pass at a safe speed and distance. Mariners are advised to keep a safety clearance to the vessel of no less than 250m.



Fisheries Questions and Concerns please contact:

Elizabeth Marchetti
Equinor Fisheries Liaison Officer
emarc@equinor.com

