

# Equinor Wind US

## Beacon Wind Sea Floor Sampling Survey Update

April 26, 2022

### Attention Fishermen

Equinor's Beacon Wind's MV Dina Polaris lost her seabed frame (SBF) on April 24<sup>th</sup> 2022 while conducting geophysical and geotechnical surveys in the Beacon Wind lease area. The SBF was lowered through the vessel moonpool into the water column. Failure of the load-bearing winch wire caused the SBF to drop through the water column to the sea floor.

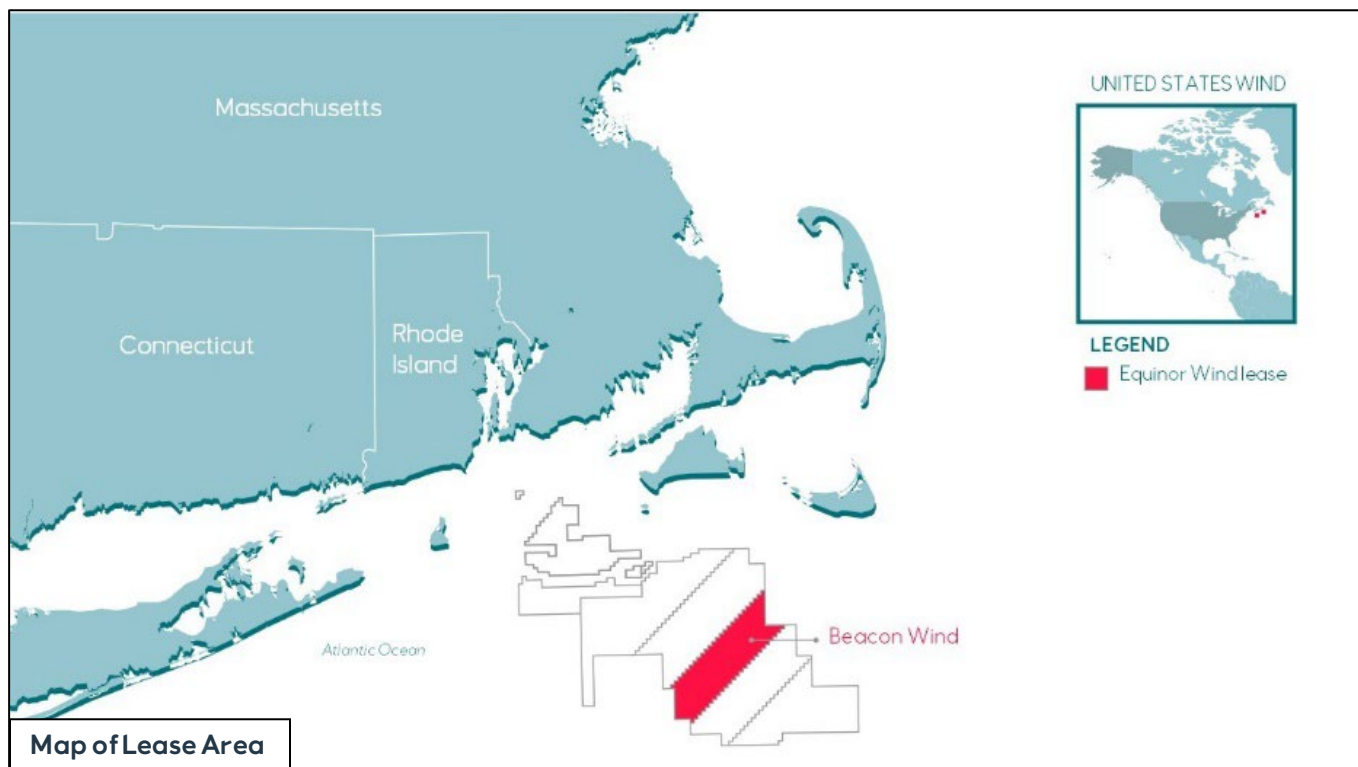
The United States Coast Guard has been notified and salvage operations are underway.

### Location of SBF:

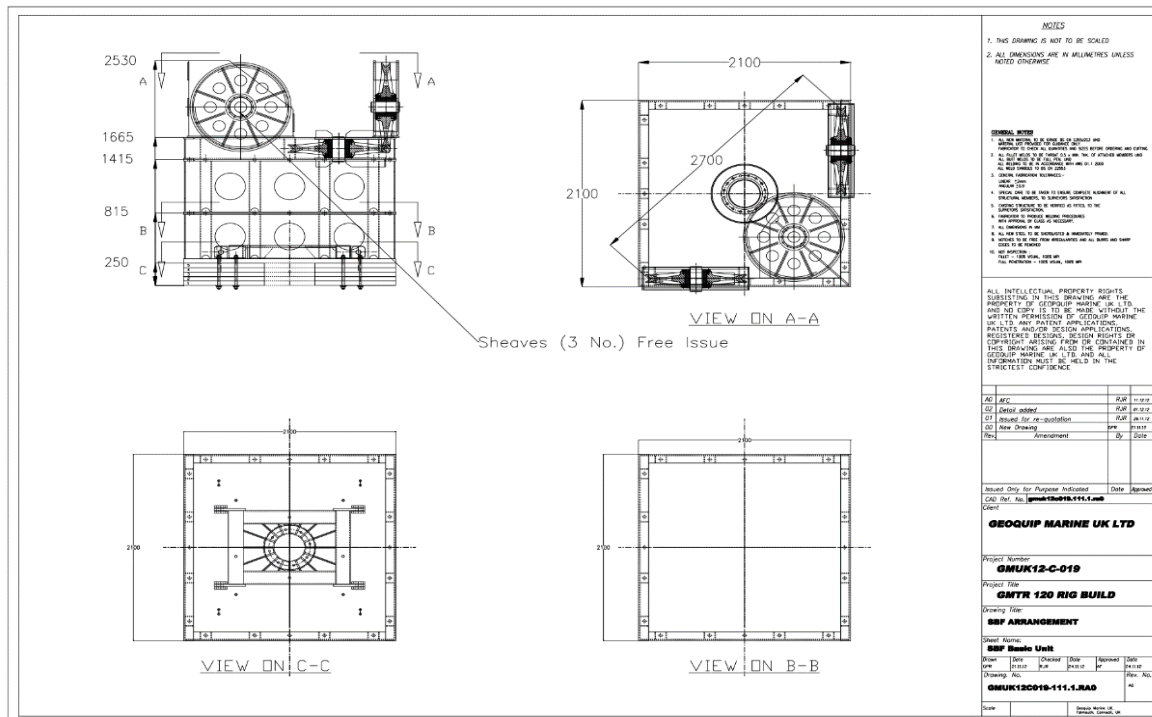
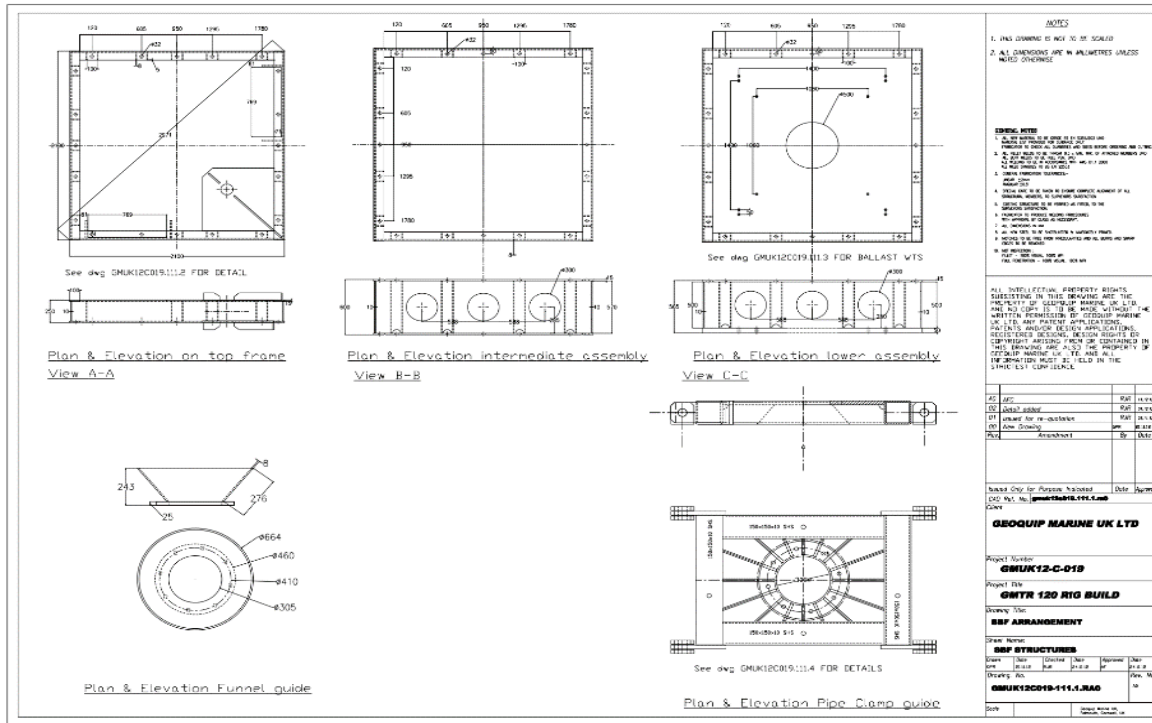
- ▶ Beacon Wind lease area
- ▶ OCS-520
- ▶ Coordinates: 40° 40' 01.412" N - 70° 40' 21.624" W
- ▶ SBF marked with Norwegian buoy
- ▶ The seabed frame is 2.1 x 2.1 x 2.5 m in size



Photograph of Seabed Frame



# SBF Dimensions



Please contact Equinor's Fisheries Liaison Officer, Elizabeth Marchetti with question or concerns: [emarc@equinor.com](mailto:emarc@equinor.com)