

Hello Elizabeth,

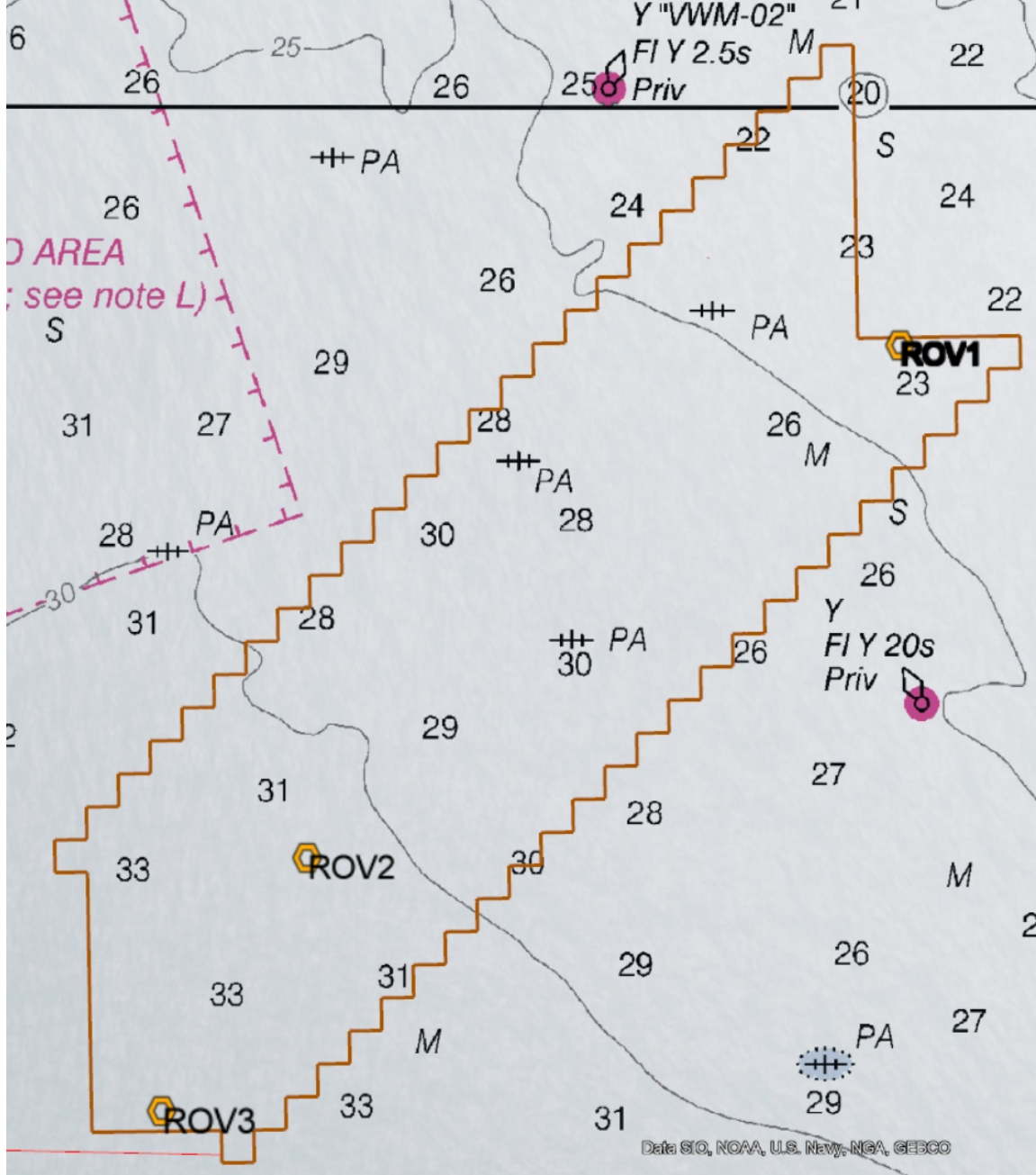
WindServe Marine's, WindServe Odyssey, will be conducting ROV inspection surveys in the Beacon Wind lease with an estimated start date May 18, 2022 to estimated completion date of May 27, 2022 operating 24 hours.

ROV inspection specifically operating at the below coordinates and are represented by ROV 1, ROV 2 & ROV 3.

40° 55.286'N, 070°20.961'W (northeast end of lease)

40° 45.079'N, 070° 36.546' W (middle southern part of lease)

40° 40.024'N, 070° 40.361' W (southwest end of lease)





WindServe Odyssey

odyssey@windservemarine.com

SAT Phone: (+1) 870 773 401 446

WindServe Odyssey Data Sheet

Fisheries Questions?

Contact :

Elizabeth Marchetti
emarc@equinor.com
+1.401.954.2902

Steve Drew
sdrew@searisksolutions.com
+1.908.339.7439

Equinor Wind US | 600 Washington Blvd, Stamford, CT 06902

[Unsubscribe emarc@equinor.com](mailto:emarc@equinor.com)

[Update Profile](#) | [Constant Contact Data Notice](#)

Sent by bysdrew@searisksolutions.com powered by



Try email marketing for free today!