



Beacon Wind Survey Update

May 2021

REMINDER

Beacon Wind geophysical surveys will continue to be conducted by Deep Helder and Dolphin on the Equinor Beacon Wind lease export cable route.

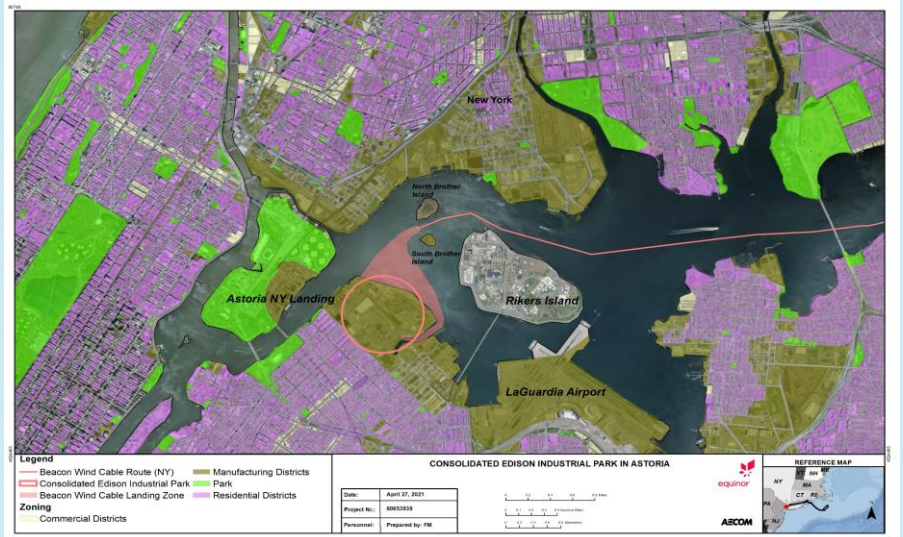
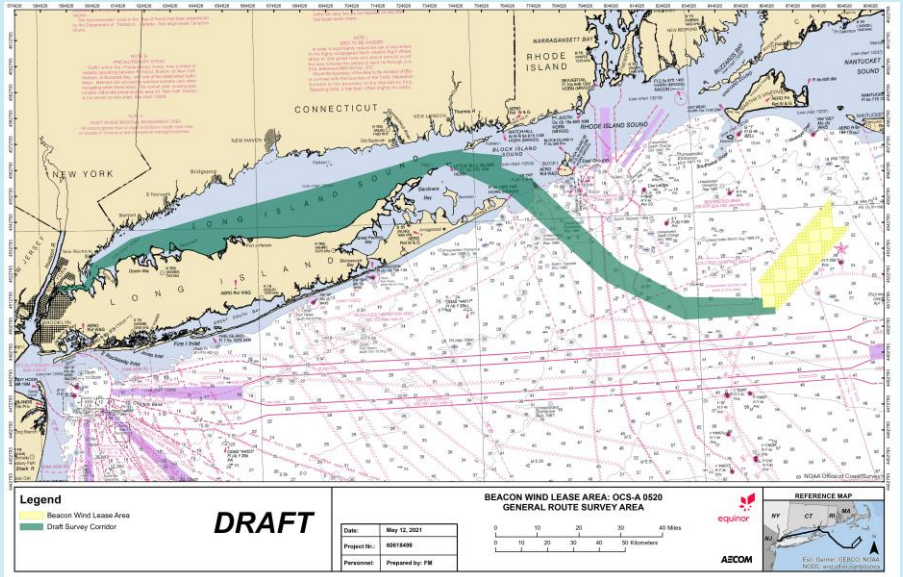
Vessel: DEEP HELDER
Call sign: PBYU
IMO: 9690872
Owner: Seamar
GSM: +31 61 90 06 277
Email: bridge_helder@seamar.nl



Vessel: DOLPHIN
Call sign: WDL 6143
IMO: NEU00325L989
Owner: CSA
GSM: 281-507-0233
Email: cchols@conshelf.com



Area of Survey Activity



Fisheries Liaison Contacts:

Sea Risk Solutions is representing Equinor Wind as Fisheries Liaison Officers and are available 24/7 to address fisheries questions and concerns of project developments.

Elizabeth Marchetti
emarc@equinor.com
emarchetti@searisksolutions.com
401-954-2902

Steve Drew
sdrew@searisksolutions.com
908-339-7439

www.equinor.com/en/what-we-do/empirewind.html
www.facebook.com/groups/597095231201268
www.searisksolutions.com



COMMERCIAL FISHERIES
CENTER OF RHODE ISLAND