

Beacon Wind Survey Update

October 2021

Equinor Wind US continues planning the Beacon Wind project in BOEM lease area OCSA-0520.

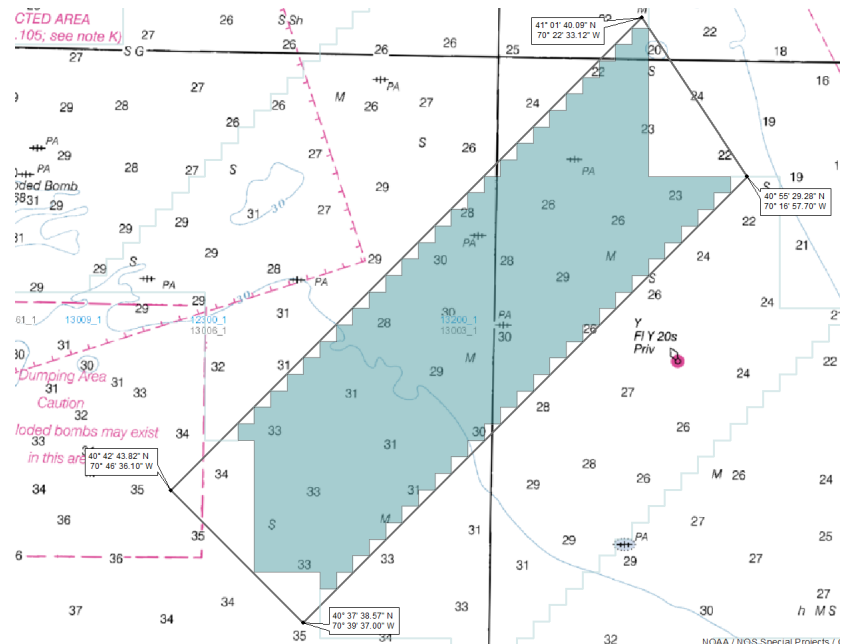
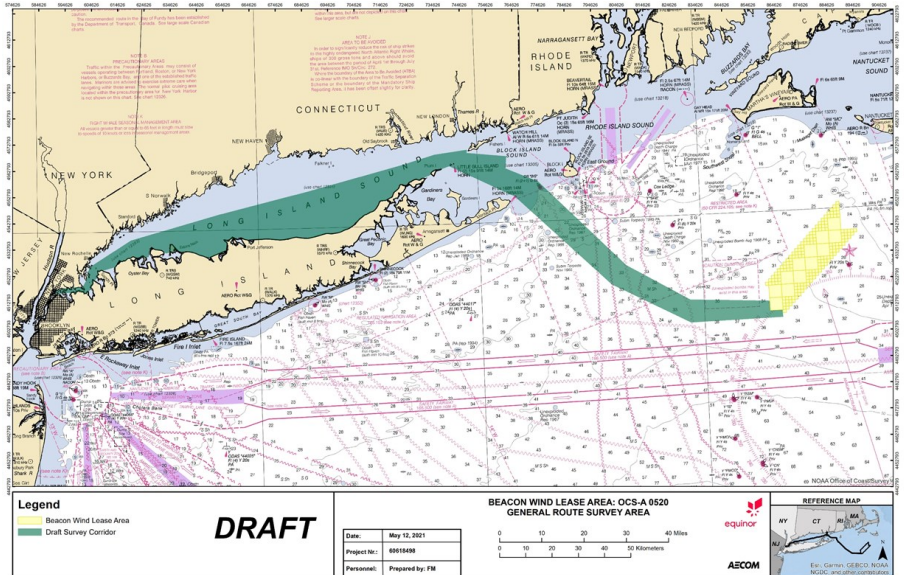
Beacon Wind is planned for an area of 128,000 acres in federal waters approximately 60 miles east of Montauk Point and 20 miles south of Nantucket. Beacon Wind will provide renewable power to over one million households in the Northeast.

Project Description:

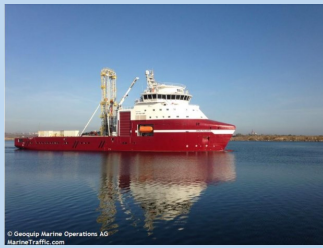
The Geotechnical or soil borings site survey area covers the planned Beacon Wind lease and the export cable route. **Vessels will be holding a fixed position when sampling operations are underway and we request all vessels to maintain a 1NM exclusion around the vessel.**

RADIO FREQUENCY VESSELS CAN BE CONTACTED ON : **CH 16**

Area of Geotechnical Survey Activity Beacon Wind lease and Export Cable Route (ECR)



Beacon Wind Survey Vessels



Dina Polaris

MMSI: 257006530

Call Sign: LAXB7

On site: October 2021 —January 2022 (Beacon Wind lease)



Geoquip Saentis

MMSI: 311963000

Call Sign: C6UM8

On site: October 2021—November 2021 (Beacon Wind lease)



Danielle Miller

MMSI: 368028980

Call Sign: WDJ9747

On site: October 2021- November 2021 (ECR)



Dolphin

IMO:NEU00325L989

Call Sign: WDL6143

On site: October 2021-November 2021 (ECR)



Stril Explorer

IMO 9484845

Call Sign: LAZT7

On Site November 2021—December 2021 (ECR)

Fisheries Liaisons and Representative Contacts

Elizabeth Marchetti

Steve Drew

emarc@equinor.com

sdrew@searisksolutions.com

401.954.2902

908.339.7439

